

MAC Tiny Houses & Cabins

Ideal for extra living space, off grid living and long stay holidays

Join our MAC team

We love to welcome new friends!

MAC Cabins Limited is a fast-growing Timber Building company based in Okehampton, Devon, with over 30 years' experience in the construction industry.

Proud to be the providers of one of the largest selections of; Timber Buildings, Log Cabins, Leisure/ Holiday Cabins & Glamping Pods, in the heart of the South West of England.

To compliment the extensive ranges of timber buildings, MAC Cabins also offers a vast variety of other Timber Frame & Modular Frame options, providing one of the widest selections of timber building options, within the market- sector.

For all timber frame styles, MAC Cabins works with self-build and custom-build projects, where the initial design has already been completed with architects. We help to guide small to medium-sized developers, on sites of one to multiple plots, to identify the best way to convert vision into reality.

MAC Cabins continues to expand its vast portfolio of designs and build options, allowing you to select the perfect combination of style, size and price, confident you will find the perfect selection to meet your growing demands. With every building, you will receive a structure that has a higher standard specification than most other comparable products.

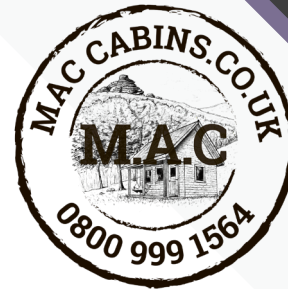
What is a Tiny house

The tiny-house movement is an architectural and social movement that advocates for downsizing living spaces, simplifying and essentially "living with less"

Tiny housing primarily represents a return to simpler living and is regarded as a potential eco-friendly and affordable solution to the existing housing industry.

Tiny Houses as a Holiday Let - While tiny houses are designed for long term living, they are great for the holiday market. Customers are continually expecting more for the same, if not less. They want better forms of accommodation, more amenities, healthier getaways and a place that was designed for today's rat-race society - allowing someone to 'unplug' and get away from it all.

Ad tiny houses are ultra modern, they provide a unique offering with a 'home away from home' feel. They also allow for longer stays as well as high quality winter stays due to the high performance of the home allowing for all year round living.



Tiny house cabins are compact living spaces that are suitable for numerous situations. From additional family living, temporary workers accommodation to unique glamping holidays.

These compact designs provide everything you would need for a short stay. They include a kitchenette with two rings, mini fridge and sink including a wet room and ample storage for personal belongings.

They're perfect as a garden pod for guest stays with sleeping on the living room sofa being a thing of the past. With a tiny house cabin, you can offer a complete private space that doesn't interfere with your own privacy.

We believe our new compact models can cater to a vast array of situations with the cabins being 6-7m long x 2.55m wide x 3.05m high



01837 357 014

0800 999 1564

www.maccabins.co.uk





Introducing the Nomad 2

The Nomad has had a little makeover! We've innovated this design to increase usable space in the loft along with new Siberian thermo wood exterior cladding and healthier build materials for the eco concious. It's bolder, more advanced and simply stunning.

The second loft has been maximised by entering the bedroom via a ladder compared to a previous back entrance and the pitch of the roof has been adjusted to offer additional space.

The rustic country style kitchen offers plenty of space for cooking with additional storage cupboards fitted over the intergrated fridge.

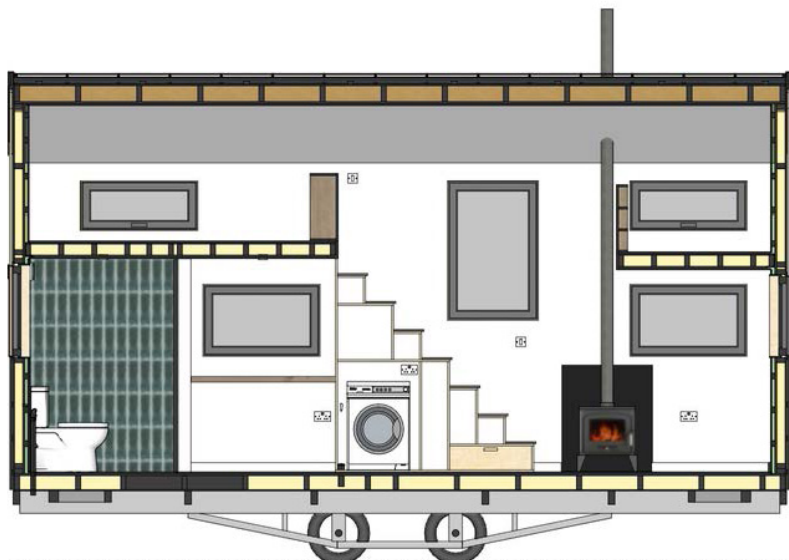
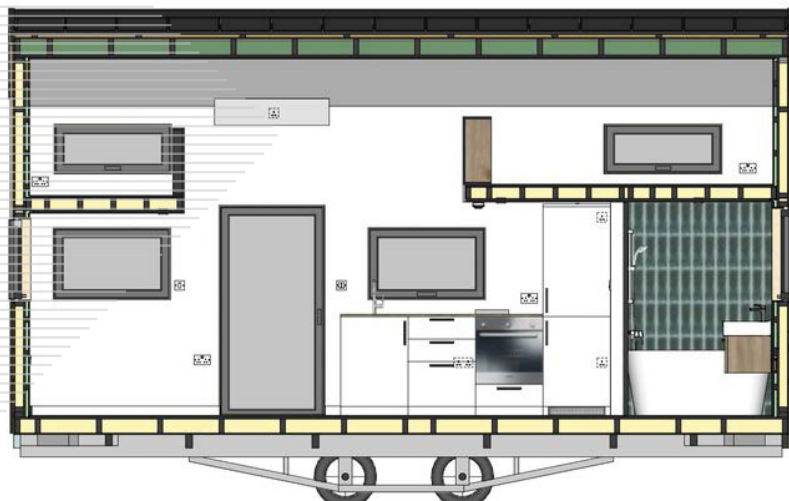
Key Features

- Two bedroom tiny house
- Rustic exterior wood finish
- Stunning large central window
- Compact kitchen with two ring cooker, sink and intergrated fridge
- Good sized main bedroom
- Comfortable living space
- Good sized second loft
- Under floor heating fitted throughout - We can also add a wood burner at an additional cost. (However we do not recommend them for both environmental and health reasons.
- Oak fittings and flooring throughout



Nomad 2 - Specifications

7m Long x 2.55m Wide x 3.6m High on groundpads or 4.2m high on trailer. Both can be easily moved and are classified as a moveable structure for planning permission



Tiny House Base

- Bespoke 7m L x 2.55m W galvanized steel trailer
- Jackpad portable ground pad system
- Ground screw installation (for permanent buildings)

Exterior Walls

- Structurally Insulated Walls (SIPs) 125mm
- Durelis vapour block boards
- PIR Insulation 100mm
- Tyvek soft membrane
- Exterior thermo treated wood in natural or anthracite
- Thermo treated wood external corner cladding

Roofing

- Single pitched roof in standing seam (anthracite)
- Structurally Insulated Walls (SIPs) 150mm
- Durelis vapour block boards
- PIR Insulation 125mm
- Tyvek soft membrane
- CLT ridge beam

Interior Walls

- Textile combination - in white
- Tiling options in bathroom
- Acoustic sound boards optional

General

- 22sqm Tiny house with two loft bedrooms
- Kingsize loft bedroom 2.7m L x 2.1m W
- Single loft bedroom 1.2m L x 2.1m W
- Integrated Kitchen
- Bathroom with shower, composting toilet and sink
- 7m Long x 2.5m W x 3.6m H (4.2m H on trailer)

Flooring

- Laminate flooring in oak effect
- Tiling options in bathroom
- Cork underlay
- Vinyl floor option in oak effect

Kitchen

- Oak worktop, White cupboard door front
- 600mm Sink unit with chrome circular sink and tap
- 600mm soft close 2 drawer unit
- 2 ring electric hob and oven
- Electric boiler with additional storage solution for kitchen
- Soft close under oven drawer

Bathroom

- Separatt composting toilet
- Chrome shower taps and showerhead
- 1.2m x 0.8m shower enclosure
- Extractor fan
- Chrome taps and vanity sink

From £57,500 per unit
Please enquire for more information

01837 357 014
help@maccabins.co.uk



www.maccabins.co.uk

0800 999 1564 • 01837 357 014



Key Features

- One bedroom tiny house
- Smart space design
- Bedroom positioned centrally with ceiling window
- Large kitchen with island and french doors
- Double french doors in the living room
- Good sized bedroom with feature window
- Laundry space & double wardrobe along the walkway
- Underfloor heating throughout



Introducing the Avon

This uber modern design has been carefully crafted to split the rooms individually allowing you to feel as if your compact home as rooms compared to an open plan model.

With the Avon 1 Bed, the living space and kitchen are separated via a sleek walkway where you'll find the fitted wardrobes, dressing table, washing machines and storage along with a full size bathroom.

The large kitchen offers lots of space for cooking and dining including access to the outdoors for dining in the sun.

The stairs to the bedroom retract to provide more living room space, which opens up to the patio for even more additional space.





Windows & Doors

- UPVC Pilkington Insulight window (double glazed)
- Upvc Pilkington Insulight french door x 2 (double glazed)
- Upvc Pilkington Insulight velux window (double glazed)
- Exterior window trims in anthracite
- Interior window trims in birch plywood
- Door lock and window locks
- Door keys and window keys

Flooring

- Laminate flooring in oak effect
- Cork underlay
- 7m x 1m 700 Watt underfloor heating

Kitchen

- Oak worktop
- White cupboard door fronts
- 600mm chrome circular sink unit and taps
- 600mm soft close three drawer unit
- 600mm sink unit with chrome sink and taps
- 600mm soft close under oven drawer unit
- 600mm tall cupboard unit
- 600mm extraction unit
- 600mm x5 wall hanging cupboard units
- 1.3m L x 0.6m Island in white
- Chrome cupboard handles
- 2 ring electric hob and oven

Loft Bedroom

- Klapster staircase in white
- Oak effect wooden divider x 2
- Oak effect flooring

Bathroom

- Seperatt composting toilet
- Chrome shower taps and showerhead
- 800 x 1000 shower enclosure
- Oak effect sliding door
- Chrome taps and white vanity sink

Storage

- 800mm double wardrobe
- 500mm oak desk top
- 600mm washing machine enclosure (washing machine not included)
- 600mm fridge/freezer enclosure
- Total space 2.5m L

Tiny House Base

- Bespoke 7m L x 2.55m W galvanized steel trailer
- Jackpad portable ground pad system option
- Ground screw installation (for permanent buildings) option

Exterior Walls

- Structurally Insulated Walls (SIPs) 125mm
- Durelis vapour block boards
- PIR Insulation 100mm
- Tyvek soft membrane
- Exterior thermo treated wood - natural finish

Roofing

- Angled roof (south facing) Standing seam in Anthracite
- Structurally Insulated Walls (SIPs) 150mm
- Durelis vapour block boards
- PIR Insulation 125mm
- Tyvek soft membrane

Interior Walls

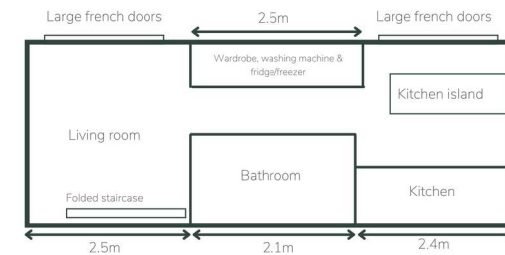
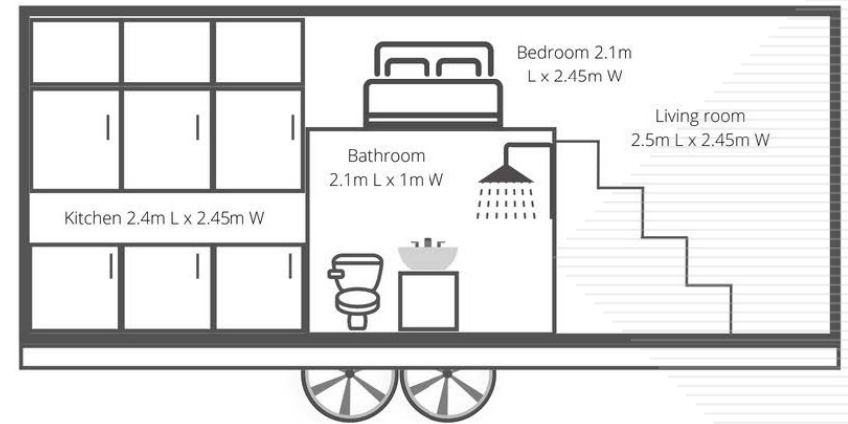
- White textile boards
- White mold proof bathroom boards

General

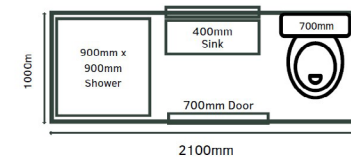
- 22.68sqm tiny house
- Kingsize loft bedroom 2.1m W x 2.3m L x 1.2m H
- Bathroom with shower, composting toilet and sink 2.1m L x 1m W x 2.2m H
- Total home - 7m Long x 2.5m W x 3.6m H (4.2m H on trailer)
- Integrated Kitchen 2.4m L x 2.3m W x 3.5m H
- Total home - 7m Long x 2.5m W x 3.6m H (4.2m H on trailer)
- Living space 2.5m L x 2.3m W x 3.5m H
- 9x double sockets, 4x single sockets
- 3x single switches, 4x double switches, 12 x spotlights
- 1 x smoke detector, 1x extractor fan, 1x MVHR

Avon - Specifications

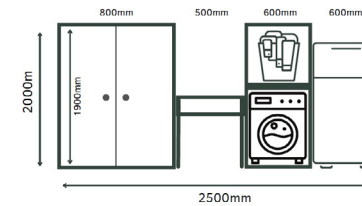
7m Long x 2.55m Wide x 3.6m High



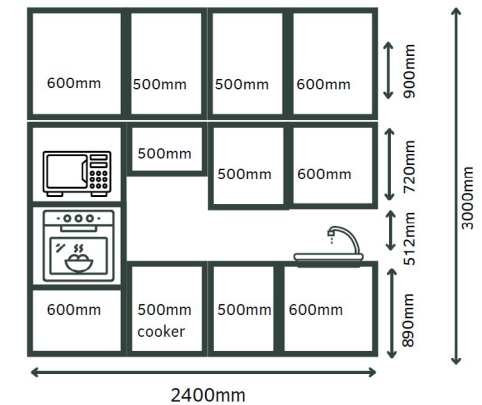
BATHROOM LAYOUT



STORAGE LAYOUT



KITCHEN LAYOUT



01837 357 014
help@maccabins.co.uk

From £58,000 per unit
Please enquire for more information



www.maccabins.co.uk

0800 999 1564 • 01837 357 014



Introducing the Betula

A stunner of a home has been designed for the holiday let market. It oozes style yet is rustic enough to fit in the middle of the woods. It's off-grid so it can be positioned almost anywhere and is compact enough to fit planning regulations whilst offering everything a customer would need for a long stay holiday!

Features a large panoramic window for beautiful views all day and night. Large double doors lead outside, ideally paired with external decking for additional outdoor space during warm summer days.

Space for a two seater sofa including a kitchenette with a two ring cooker and sink for making meals.

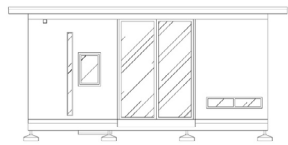
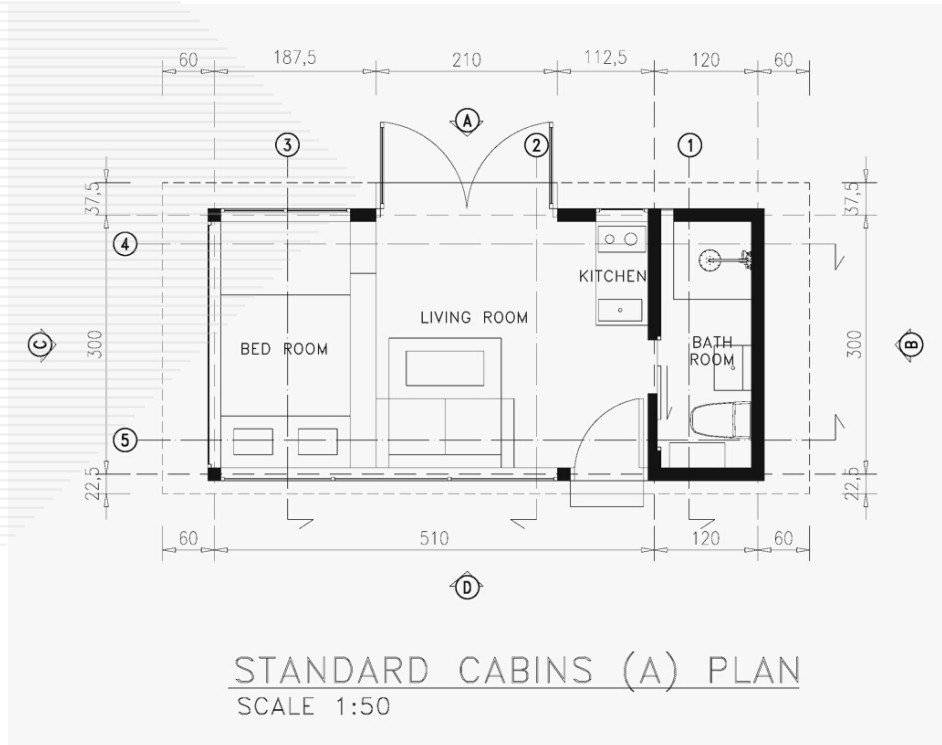
Key Features

- One bedroom cabin style
- Rustic birch wood finish
- Stunning panoramic window
- Double french doors to outside
- Compact kitchen with two ring cooker
- Great for long stays
- Good size bathroom with ample light



Betula - Specifications

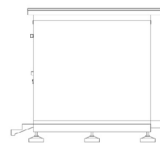
Bespoke 6m Long x 3m Wide x 3.05m High on a galvanized steel trailer



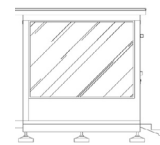
ELEVATION A (A)
SCALE 1:50



ELEVATION D (A)
SCALE 1:50



ELEVATION B (A)
SCALE 1:50



ELEVATION C (A)
SCALE 1:50



Cabin Base

- Bespoke 6m L x 3m W galvanized steel trailer
- Leveling feet for trailer
- Jackpad portable ground pad system option
- Ground screw installation (for permanent buildings) option

Exterior Walls

- Structurally Insulated Walls (SIPs) 125mm
- Durelis vapour block boards
- PIR Insulation 100mm
- Tyvek soft membrane
- Exterior thermo treated wood - natural finish

Roofing

- Angled roof (south facing) Standing seam in Anthracite
- Structurally Insulated Walls (SIPs) 150mm
- Durelis vapour block boards
- PIR Insulation 125mm
- Tyvek soft membrane

Interior Walls

- Birch plywood wall panel
- White mold proof bathroom boards

General

- 18sqm tiny house cabin
- Open plan living/sleeping/dining
- Bathroom with shower, composting toilet and sink 3m L x 1m W x 3m H
- Total home - 6m Long x 3m W x 3.05m H
- Compact Kitchenette 1.8m L x 0.6m D
- Living space 3.2m L x 3m W x 3m H
- Bed space to fit a kingsize bed
- 3x single switches, 3 x double sockets, 6 x spotlights
- 1 x smoke detector, 1x extractor fan, 1x MVHR

Windows & Doors

- UPVC Pilkington Insulight bathroom windows, french door, large feature window and fire escape window (double glazed)
- Exterior window trims in anthracite
- Interior window trims in birch plywood

Flooring

- Solid birch wood flooring
- Cork underlay
- 7m x 1m 700watt underfloor heating

Kitchen

- White laminate worktop
- White cupboard door fronts
- 600mm soft close three drawer unit, sink unit with chrome sink taps and cupboard unit.
- 2 ring electric hob
- 600mm extraction unit
- 600mm chrome circular sink unit and taps
- 1200mm shelving unit in white
- Chrome cupboard handles

Bedroom

- Under bedroom storage
- Birch wood bed frame with steps
- 1.9m W x 3m L bed space

Bathroom

- Separatt composting toilet
- Chrome shower taps and showerhead
- 800x1000 shower enclosure
- Oak effect sliding door
- Chrome taps and white vanity sink

From £50,000 per unit
Please enquire for more information

01837 357 014
help@maccabins.co.uk



www.maccabins.co.uk

0800 999 1564 • 01837 357 014



Key Features

- One bedroom tiny house
- Modern finishes throughout
- Bedroom positioned under living space
- Creative space for dining/working
- Stunning panoramic window
- Double french doors to the outside
- Good size kitchen with two ring cooker
- Great for long stays
- Good size bathroom with ample light
- Comfortable seating area



Introducing the Darwen

This home is a cross between a tiny house and a cabin at 6m long x 2.5m wide x 3.5m high. It's perfect for those looking for something more compact than a traditional tiny house or for those looking for the next thing to market as a holiday let!

Clever storage solutions, perfect for tiny house living or long stay holidays.

No need to chill out on a bed! We've designed this home to have a full sized living space with the bedroom positioned underneath. With ample space and lots of natural light, you'll get a wonderful night's sleep.

The kitchen has been designed for everyday cooking as well as a double door to the outside should you want to create additional space.



Darwen - Specifications

6m long x 2.5m wide x 3.5m high

Windows & Doors

- UPVC Pilkington Insulight bathroom window (double glazed)
- Upvc Pilkington Insulight french door (double glazed)
- Upvc Pilkington Insulight large feature window (double glazed)
- Upvc Pilkington Insulight fire escape window (double glazed)
- Exterior window trims in anthracite
- Interior window trims in birch plywood
- Door lock and window locks
- Door keys and window keys

Flooring

- Solid birch wood flooring
- White laminate worktop
- 7m x 1m 700 Watt underfloor heating

Kitchen

- White laminate worktop
- White cupboard door fronts
- 600mm soft close three drawer unit
- 600mm sink unit with chrome sink and taps
- 2 ring electric hob
- Cork underlay
- 600mm extraction unit
- Chrome cupboard handles

Living room

- Solid birch wood flooring
- Steps to raised living space in birch solid wood
- Solid birch railing

Bathroom

- Seperatt composting toilet
- Chrome shower taps and showerhead
- 800 x 1000 shower enclosure
- Oak effect sliding door
- Chrome taps and white vanity sink
- 600mm storage cupboard
- 600mm storage unit for washing machine (machine not included*)

Tiny Cabin Base

- Bespoke 6m L x 3m W galvanized steel trailer
- Leveling feet for trailer
- Jackpad portable ground pad system option

Exterior Walls

- Structurally Insulated Walls (SIPs) 125mm
- Durelis vapour block boards
- PIR Insulation 100mm
- Tyvek soft membrane
- Exterior thermo treated wood - Anthracite finish

Roofing

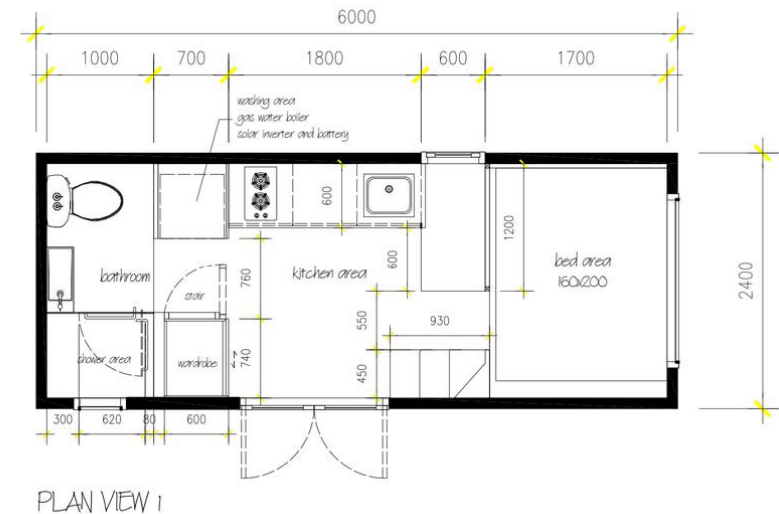
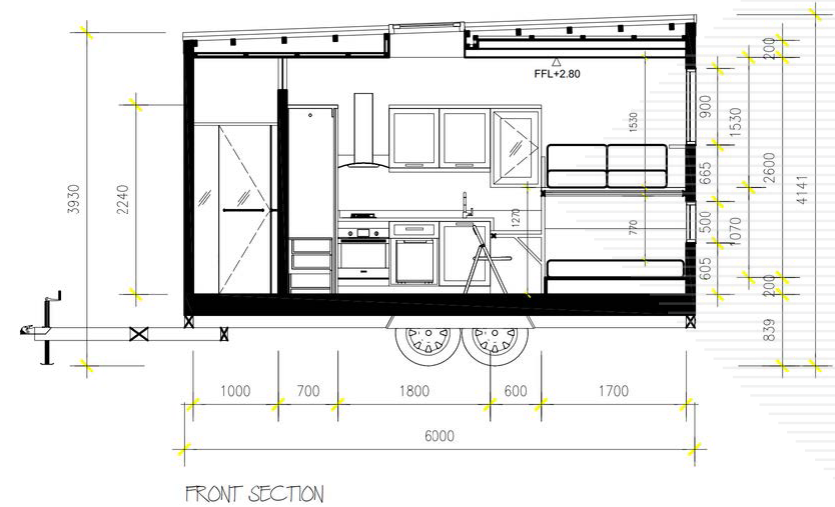
- Angled roof (south facing) Standing seam in Anthracite
- Structurally Insulated Walls (SIPs) 150mm
- Durelis vapour block boards
- PIR Insulation 125mm
- Tyvek soft membrane

Interior Walls

- White wall panelling
- White mold proof bathroom boards

General

- 20.9sqm tiny house cabin
- Open plan living/sleeping/dining
- Bathroom with shower, composting toilet and sink 2.3m L x 1m W x 3m H
- Total home - 6m Long x 2.55m W x 3.05m H
- Living space 1.7m L x 2.3m W x 1.7m H
- Compact Kitchenette 1.8m L x 0.6m D
- Under living room bedroom space 1.7m L x 2.3m W x 1.1m H
- 3x single switches, 3 x double sockets, 6 x spotlights
- 1 x smoke detector, 1x extractor fan, 1x MVHR



01837 357 014
help@maccabins.co.uk

From £51,500 per unit
Please enquire for more information



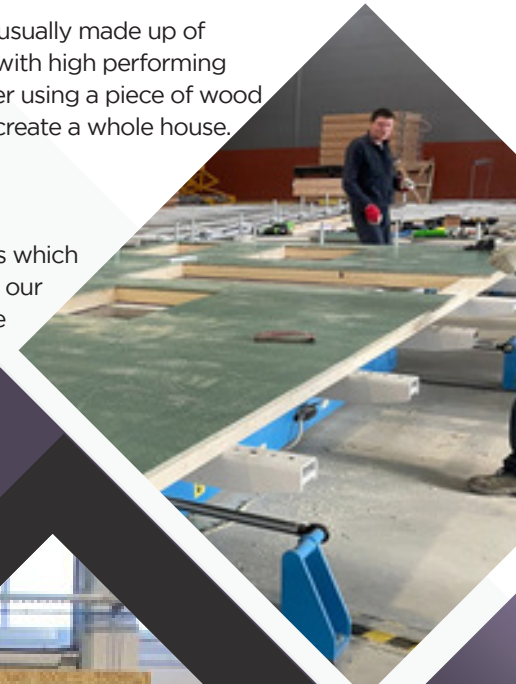
Building Methods & Materials

Commonly, a SIP, structurally insulated panel, is usually made up of two OSB boards that are sandwiched together with high performing insulation. These panels are then slotted together using a piece of wood called a spline. One by one, they fit together to create a whole house.

Why do we use Durelis Boards?

Rather than OSB we have chosen Durelis boards which are made from 100% recovered wood to reduce our carbon footprint while creating a healthier home for our customers. Another bonus is Durelis increases the airtightness and increases the performance of the home.

Durelis also provides a vapour barrier that reduces condensation build up common in many tiny homes.



SIP Construction

Traditionally, SIP construction is several SIP panels slotted together with splines to create the walls, floors and roof.

See the images here of a SIP wall being created on a table called a butterfly table. Once a wall has been completed, the table lifts and flips the whole wall over to check and complete the otherside.

What do we do differently?

As we continued to innovate, we discovered that you could build one entire wall as one SIP panel. This new method compared to the traditional SIP sections (around 8-10 pieces), means the home will be even more airtight creating a super high-performing home! Amazing right?

What do I mean by high performing?

While tiny houses are not rated by EPC ratings as traditional buildings are, we have tested our homes to show that they would hover between an A and B rating. Whereas the new building method puts us firmly in a strong A rating. (EPC testing results to be expected in May 2022)



Our other Mac Ranges

Glamping Pods

Perfect for adding that extra room or extra accommodation to your home

Small Homes / Tiny Houses

A different way onto the property chain.

Office Pods

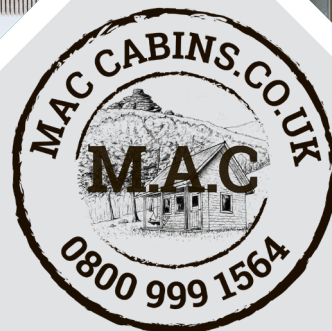
Design your perfect work environment with a office cabin made around your needs

Leisure Cabins

The perfect addition to your garden and property, add a sun/garden/play room to your property

Log Cabins

Own your own picturesque log cabin



0800 999 1564
www.maccabins.co.uk



www.maccabins.co.uk

help@maccabins.co.uk

0800 999 1564

01837 357 014



Unit 4 Cranmere Road, Exeter Road Industrial Estate,
Okehampton, Devon, EX20 1UE

All rights © MAC Cabins Ltd